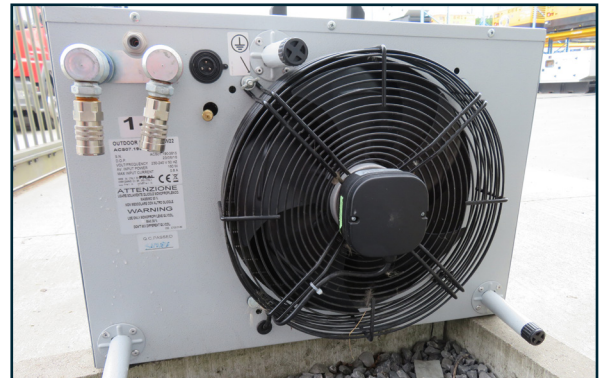




### 1. Inside unit

Place the inside unit in the space you want to climatize.



### 2. Outside unit

Put the outside unit in open air, at max. 20m distance from the inside unit.



### 3. Connect tubes and cables on the inside unit

- Connect the prefilled glycoltubes (red > red / blue > blue).
- Connect the power supply cable between both units.
- Insert the condensation tube.
- Attach the grounding cable.



### 4. Connect tubes and cables on the outside unit

- Connect the prefilled glycoltubes (red> red / blue > blue).
- Connect the power supply cable between both units.
- Insert the condensation tube.
- Attach the grounding cable.



### 5. Insert power plug

- Green light on the upper left: the airco is connected.
- Choose between the different working modes: (0) Off / (I) Cooling / (II) Ventilation
- Set the fan speed (Min - Med - Max)
- Choose the desired temperature.

#### Delta-Temp Belgium

Lange Ambachtstraat 13, 9860 Oosterzele  
 T: +32 (0)9 362 74 87  
 E : info@delta-temp.com  
 www.delta-temp.be

#### Delta-Temp Germany

Carl-Still-Straße 19, 45659 Recklinghausen  
 T: +49 800 4048120  
 E : info@delta-temp.de  
 www.delta-temp.de