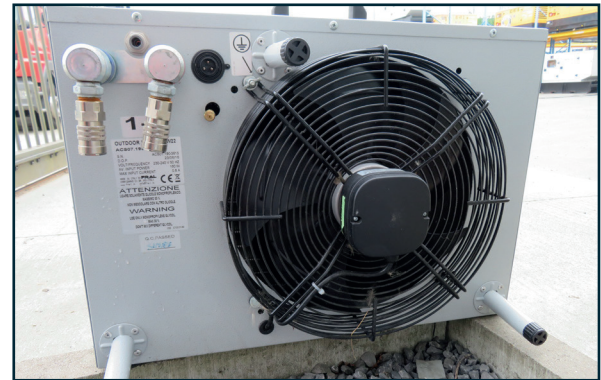




1. Inside unit

Place the inside unit in the space you want to climatize.



2. Outside unit

Put the outside unit in open air, at max. 20m distance from the inside unit.



3. Connect tubes and cables on the inside unit

- Connect the prefilled glycoltubes (red > red / blue > blue).
- Connect the power supply cable between both units.
- Insert the condensation tube.
- Attach the grounding cable.



4. Connect tubes and cables on the outside unit

- Connect the prefilled glycoltubes (red> red / blue > blue).
- Connect the power supply cable between both units.
- Insert the condensation tube.
- Attach the grounding cable.



5. Insert power plug

- Green light on the upper left: the airco is connected.
- Choose between the different working modes: (0) Off / (I) Cooling / (II) Ventilation
- Set the fan speed (Min - Med - Max)
- Choose the desired temperature.

Delta-Temp Belgium

Lange Ambachtstraat 13, 9860 Oosterzele
T: +32 (0)9 362 74 87
E : info@delta-temp.com
www.delta-temp.be

Delta-Temp Germany

Carl-Still-Straße 19, 45659 Recklinghausen
T: +49 800 4048120
E : info@delta-temp.de
www.delta-temp.de

Important Information:

The mobile split air conditioner AC 6.7 is a robust and durable air conditioner. Despite this, there may be malfunctions due to transportation. Here you can find out how an error can be rectified quickly and easily.

LED lights up RED



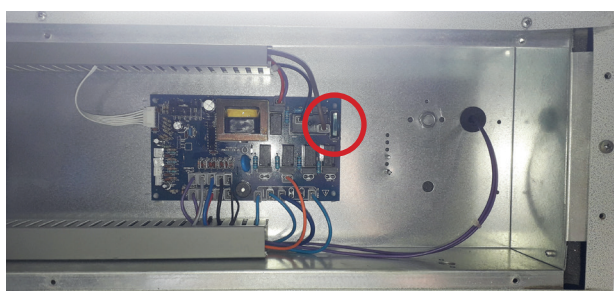
1. Check whether the LED light on the control panel glows green. Red light means error.



2. Check the power supply.



3. To reset the machine, unplug the power cord for 60 seconds and then plug it back in.



4. Check the fuse (Qualified personnel only. Only carry out when there is no current. Non-qualified personnel please contact Delta-Temp). To do this, remove the cover on the back of the device with 8 screws.



5. Check the water connections and condensate hose for tightness and correct seating. Red to red and blue to blue.



6. Check the water glycol tank. This tank must always be full.

Delta-Temp Belgium

Lange Ambachtstraat 13, 9860 Oosterzele
T: +32 (0)9 362 74 87
E : info@delta-temp.com
www.delta-temp.be

Delta-Temp Germany

Carl-Still-Straße 19, 45659 Recklinghausen
T: +49 800 4048120
E : info@delta-temp.de
www.delta-temp.de



7. Error message +\"Pump\". Unplug the air conditioner and check if the pump can move freely. Insert a long flathead screwdriver into the hole on the left side of the unit and attempt to rotate the pump. If the pump does not rotate, there is a defect: contact Delta Temp.



8. Error message +\"LOPS\". Clean the internal fan or eliminate the leak in the refrigerant circuit (qualified personnel only. Non-qualified personnel please contact Delta-Temp).



9. Error message +\"HIPS\". After doing these checks and fixing the problem, press the „Reset“ button.



10. Unplug the power cord and plug it back in to reset all alarms.

Error message	Possible problem	Possible solution
+\"Pump\"	Internal pump alarm is active.	See point 7. , 10.
+,\"LOPS\".	Dirty internal fan or leak in the refrigerant circuit.	See point 8. , 10.
+,\"HIPS\"	Water connections incorrectly connected.	See point 5. , 9. , 10.
	Level in the water-glycol tank is too low.	See point 6. , 9. , 10.
	Fan not working properly.	Contact Delta Temp
	Outside temperature is too high (above 35 - 40°C).	-
	Glycol water pump not working properly.	Contact Delta Temp

Delta-Temp Belgium

Lange Ambachtstraat 13, 9860 Oosterzele
T: +32 (0)9 362 74 87
E : info@delta-temp.com
www.delta-temp.be

Delta-Temp Germany

Carl-Still-Straße 19, 45659 Recklinghausen
T: +49 800 4048120
E : info@delta-temp.de
www.delta-temp.de